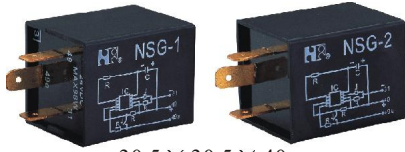


NSG-1 & NSG-2



30.5 × 30.5 × 40

Features

- Stable electronic timing.
- Wide operating voltage and temperature range.
- Suitable for flash light during car turning.

Ordering Information

NSG-1 **A** **Z**
 1 2 3

1 Part number : NSG-1 NSG-2
 2 Contact arrangement :A:1A ; B:1B

3 Enclosure; Z: Dust cover

Contact Data

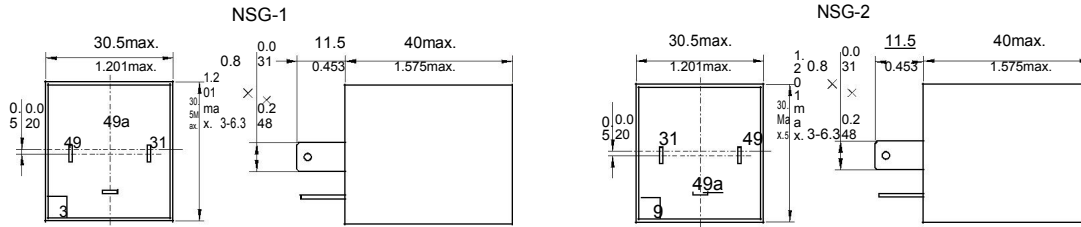
Rated voltage	12VDC,24VDC
Operating voltage drop	<0.4VDC at rated turn signal load
Device voltage drop	<0.45VDC at rated hazard signal load
Initial turn-on	50ms
Sound pressure level	70dB
Upper limit temperature for the coil	125°C

Characteristics

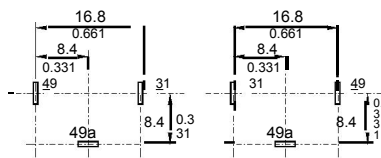
Contact Arrangement	1A (SPSTNQ)		
Max output power	98W		
Shock Resistance	200m/s ² 10ms Half sine wave pulse IEC 68-2-27 Test Ea		
Vibration Resistance	10Hz~40Hz Double amplitude 1.27mm IEC 68-2-6 Test Fc 40Hz~70Hz 50m/s ² 70Hz~100Hz Double amplitude 0.5mm IEC 68-2-6 Test Fc 100Hz~500Hz 100m/s ²		
Drop test	Capable of meeting specifications 1m drop onto concrete IEC 68-2-32 Test Ed method 1		
Contact data: Load requirements at 12.8VDC	Loads	2Lamp system	3Lamp system
	Turn signal mode:Rated loads Outage loads 2 × 21W	2 × 21W +1 × 5W +1 × 1.2W 1 × 21W +1 × 5W +1 × 1.2W	3 × 21W +1 × 5W +1 × 1.2W 2 × 21W +1 × 5W +1 × 1.2W
	Hazard mode : Rated loads	4 × 21W +2 × 5W +2 × 1.2W	6 × 21W +2 × 5W +2 × 1.2W
Ambient temperature	-40°C ~70°C		
Relative humidity	20%~50% at 23 °C		
Mass	35g Approx		

Dimensions

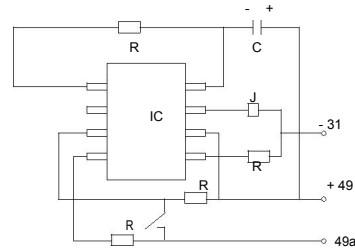
mm /inch



Dimensions



Mounting (Bottom view)



Wiring diagram

NOTES 1).Dimensions are in millimeters.

2).Inch equivalents are given for general information only.